

• PAINTERS + SCULPTORS

from the GREENWICH STUDIOS -

Ben-David • Crozier • Dellow •
Gili • Gouk • Hallam • Herdman •
Hopkins • Jones • Lockey • Morris •
Naylor • Persey • Rigden • Rome •
Shemilt • Thomson • Unsworth •

• WOODLANDS GALLERY •

90 MYCENAE RD • BLACKHEATH •
LONDON S.E.3 (Borough of Greenwich)

• 9th MAY - 9th JUNE •

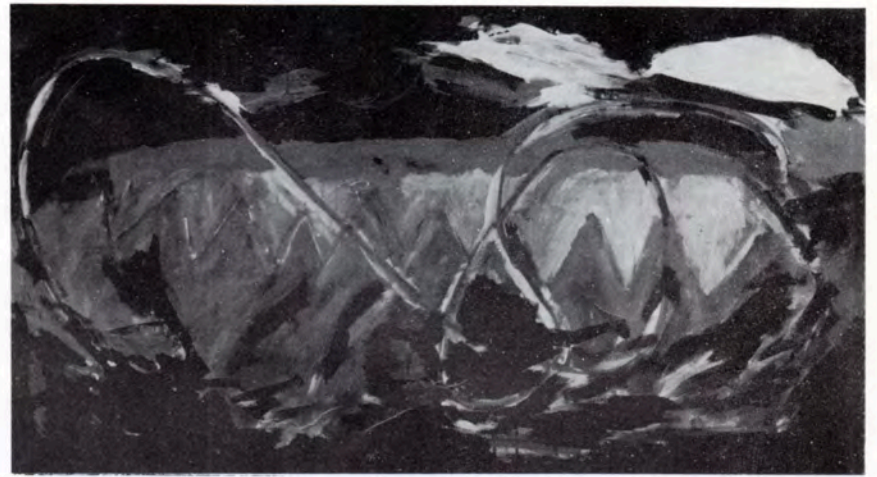
Week-days : 10 - 7.30
Sat : 10 - 6 • Sun : 2 - 6
(Closed Wednesday)

Admission Free •

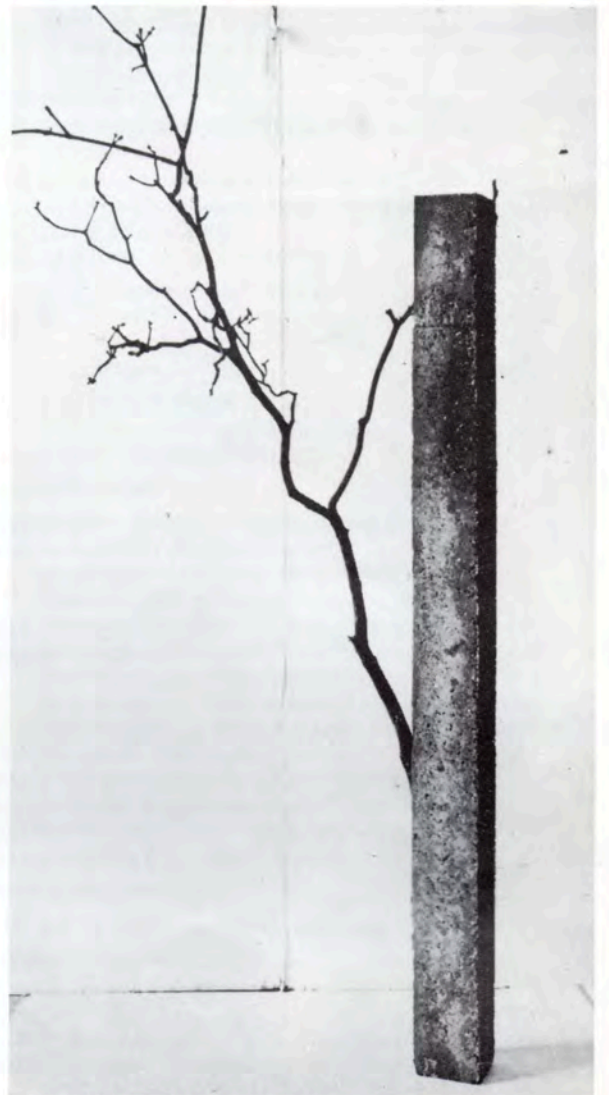
• With the financial assistance of the Greater
London Arts Association •



Alan Gouk. *Pigskin Pushover*.
1979. Acrylic on canvas.
Photo: Carlos Granger.

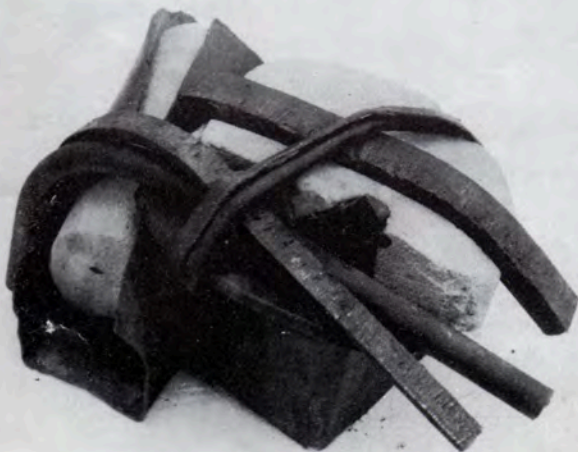


Clyde Hopkins. *The Saw*. 1978. Acrylic on canvas.



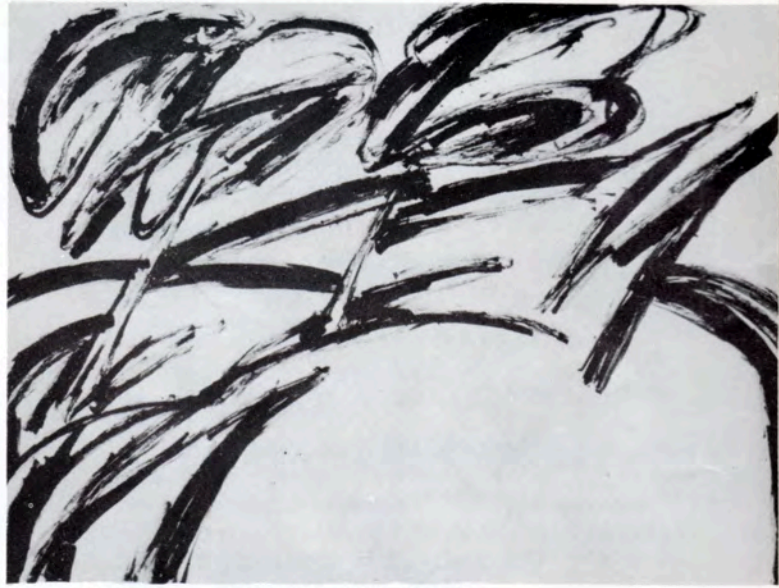
Zadok Ben-David. *Autumn*. 1980.
Concrete & Twigs. Photo: Mike Ganor.

Mary Shemilt. *Untitled*. 1980. Concrete & steel.



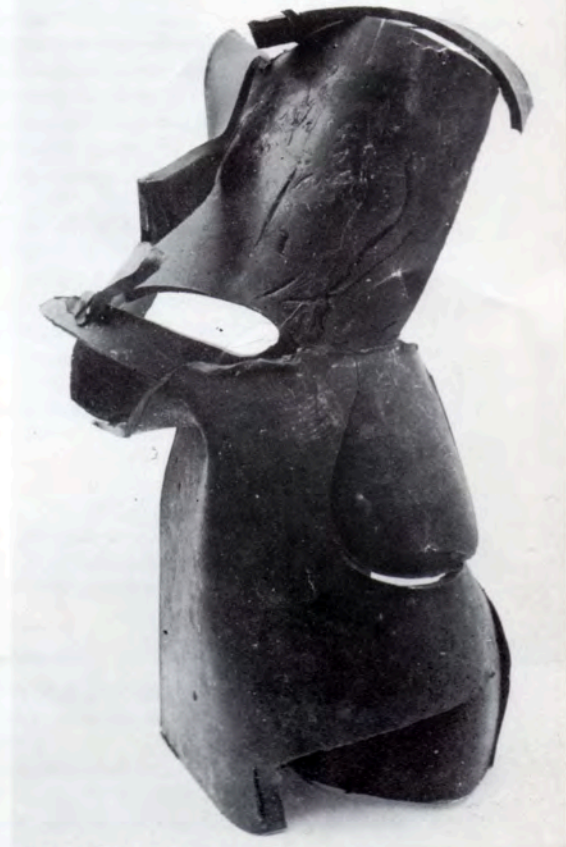
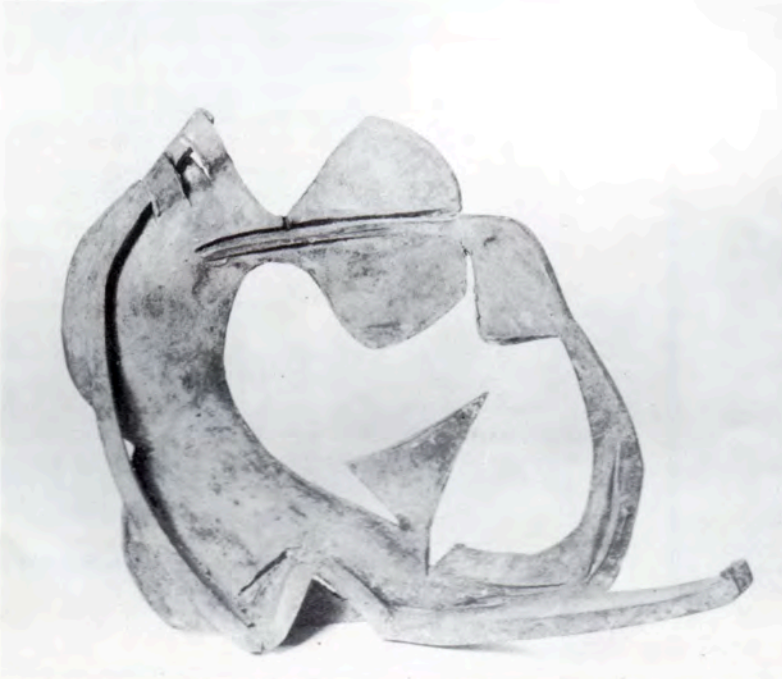


Mali Morris. *Ligo Ligo*. 1979. Acrylic on canvas.



William Crozier. *Observatory Hill*. 1980. Drawing.

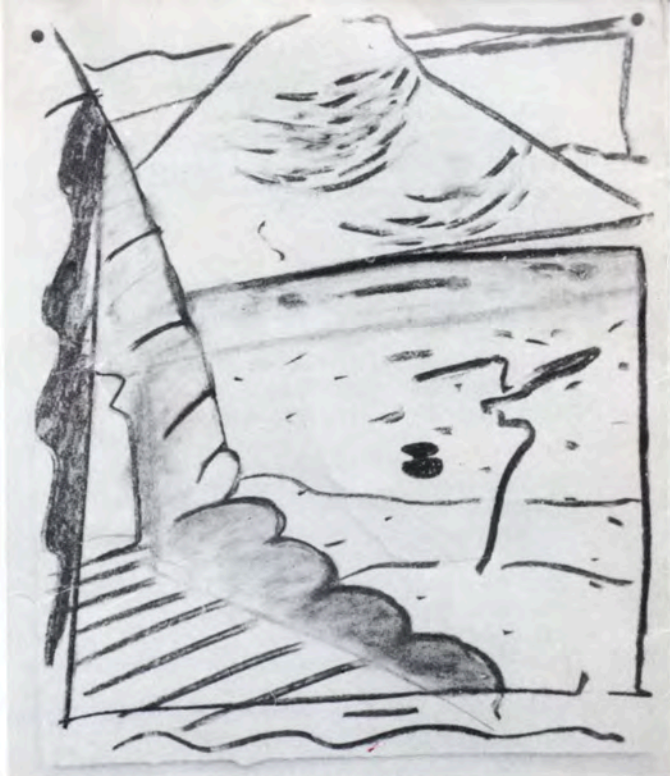
Eva Lockey.



Richard Rome. *Greenwich series 'Voice'*. 1980. Wax



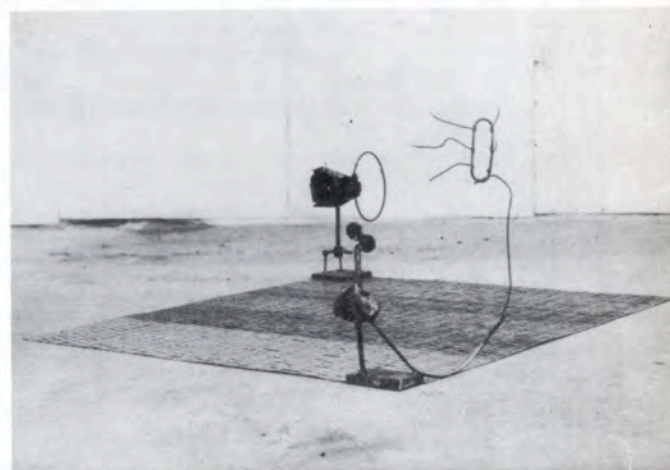
Alexander Thomson. *Figure in Landscape*.



Jeffrey Dellow. *Nido*. 1979. Charcoal on paper.

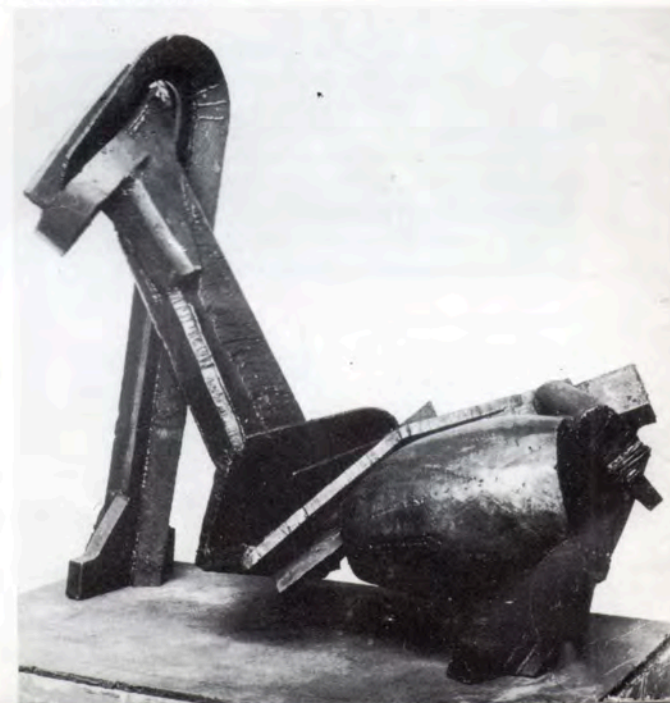


Marilyn Hallam. *White Horse*. 1980. Oil on canvas.



Stephen Naylor. *Coquette I*. 1981.
Welded steel & woven strip.

Katherine Gili. *Stem*. 1979/80. Mild steel waxed.
Photo: Sam Thomas.



Patrick Jones.

